

# Technical Solution Sheet 1.01

## Sanitary Plumbing

### Air Admittance Valves

#### AIM

The aim of this technical solution is to clarify the requirements for ventilation of sanitary plumbing and drainage systems where air admittance valves are installed.

#### PLUMBING REGULATIONS 2008

The *Plumbing Code of Australia* (PCA) is adopted by and forms part of the *Plumbing Regulations 2008*. Part C1 of the PCA specifies the objectives and performance requirements related to the installation of sanitary plumbing systems. *AS/NZS 3500.2: Plumbing and drainage Part 2: Sanitary plumbing and drainage* is a “deemed to satisfy” document listed in Part C1 of the PCA and contains a section on “General design requirements for sanitary plumbing systems”.

#### BACKGROUND

Air Admittance Valves (AAV's) may be installed as an alternative to a piped vent providing that certain conditions are observed. AAV's must comply with the product standard *AS/NZS 4536: Air admittance valves (AAV's) for use in sanitary plumbing and drainage systems*. AAV's are available as a single unit or may be formed as an integral part of a fixture trap.

AAV's having the “W” (WaterMark) approval may be used in sanitary plumbing systems.

Except for fixtures discharging to gullies, AAV's may be used to vent fixture discharge pipes where the fixture discharge pipe exceeds the maximum permitted unventilated length. AAV's may be used in sanitary plumbing systems as trap vents, group vents, branch vents, some

stack vents, and for the ventilation of branch drains.

#### 1. USING AAV'S INSTEAD OF PIPED VENTS

*AS/NZS 3500.2* permits AAV's to be used as (see figures 3 to 8):

- An option to a Trap Vent in any system of plumbing where a single fixture discharge pipe exceeds the maximum permitted unventilated distance.
- An option to a Group Vent or Branch Vent in a Fully Ventilated (Modified) System of Plumbing.
- An option to a Stack Vent, where the stack extends through less than 10 floor levels.
- An option for the ventilation of a Branch Drain where the combined length of the drain and fixture discharge pipe exceeds ten metres.

#### 2. RESTRICTIONS ON USE

AAV's must only be used on sanitary plumbing systems that have at least one open DN50 minimum vent connected to the drain. Where there are three or more buildings connected on a shared allotment drain, the sanitary drainage system servicing each building must have at least one open upstream vent.

Each open upstream vent must be sized as a drainage vent, and be at least DN50. For trap vents and group vents, the selected AAV must have a determined airflow capacity not less than that shown in the table in Figure 1. The determined airflow in litres per second (L/s) must be indicated on each valve.

# Technical Solution Sheet 1.01

AAV's that form an integral part of a fixture trap may only be used as a trap vent.

## 3. DETERMINED AIRFLOW

The selected AAV must have a determined airflow capacity not less than that shown in the tables in Figures 1 and 2. The determined airflow in L/s must be indicated on each valve.

**FIGURE 1 - MINIMUM DETERMINED AIRFLOW CAPACITY OF AAV'S WHEN USED AS A TRAP OR GROUP VENT**

Fixture unit (FU) loading on discharge stack	Minimum determined airflow capacity of AAV L/s
6	1
9	2
10	2.4
12	2.7
18	3.3
24	3.8
30	4.2
36	4.6
42	5
48	5.3
54	5.6
60	6

**FIGURE 2 - MINIMUM DETERMINED AIRFLOW CAPACITY OF AAV'S WHEN USED AS A STACK VENT**

Fixture unit (FU) loading of discharge pipe or branch drain	Minimum determined airflow capacity L/s
1	3
2	4
4	6
6	7
10	9
12	10
15	11
20	13
25	15
30	16
40	18
60	23

80	26
100	29
200	41
300	51
400	58
500	65
600	72
1000	92

## 4. SIZING EXAMPLES

### • AAV as a Trap Vent

An AAV with a minimum airflow capacity of 1 L/s is suitable for trap ventilation of any fixture. This is because the minimum airflow capacity of 1 L/s is suitable for a maximum of six fixture units (FU's) which is also the maximum fixture unit rating assigned to any single fixture (e.g. closet pan with flush-valve).

### • AAV as a Group Vent

The method for sizing an AAV for a single group of up to ten fixtures connected to a common discharge pipe is different to sizing for a piped group vent.

Sizing for AAV's is based on the total fixture unit loading of the common discharge pipe, whereas sizing for group vents is based on the largest section of a common discharge pipe.

### Example:

An AAV is to be provided for a fixture group of four basins (4FU's), two showers (4FU's) and three closet pans with cisterns (12FU's), a total of 20 FU's. From the table in Figure 1, 20 FU's falls between the values for 18 FU's (3.3 L/s) & 24 FU's (3.8 L/s). Therefore an AAV having an extrapolated minimum airflow of 3.5 L/s would be suitable.

If a fixture group connected to a common discharge pipe exceeds ten fixtures but is less than 20 fixtures, then the fixtures would be divided into two approximately equal groups. Each group would require its own AAV and the minimum airflow for each AAV would be determined on the total FU's for the respective fixture group served by the AAV.

# Technical Solution Sheet 1.01

In installations where the common discharge pipe serving a fixture group, branches from a common discharge pipe serving another fixture group, each is fitted with an AAV. Each group requires an AAV and the minimum airflow for the AAV would be determined on the total FU's for that group.

## 5. LOCATION OF AAV'S

AAV's must be located so that:

- They are accessible for service and replacement.
- Adequate air can enter the valve.
- Where fitted within a wall space, ventilation openings are provided.
- Where installed in a ceiling space, the AAV should be 150mm (approximately) above the ceiling to clear any ceiling insulation.

## 6. INSTALLING AAV'S

When installing an AAV (other than an integral part of a fixture trap) the valve shall be:

- Connected to the piping in accordance with the manufacturer's instructions.
- Connected to a fixture discharge pipe as for a trap vent (see Figure 1) or to a fixture discharge pipe or common discharge pipe, as the case may be, for a group vent or branch vent (see Figure 2), or to a discharge stack as for a stack vent.

- No more than 1000mm below the flood level of the fixture to which it is connected. For stack vents, a manufacturer may also apply the 1000mm requirement below the flood level of the topmost fixture connected to the stack or alternatively, that the AAV be 150mm above the flood level of the topmost fixture.

- Only installed as a stack vent where the stack extends through less than ten floor levels.

**Note:** Should the discharge stack require relief ventilation, then either a relief vent must extend separately to the open air, or a pressure attenuator must be fitted.

- Installed upright within 5% of a vertical position.
- Installed in areas where the ambient temperature or water discharge may vary between 0°C and 60°C.
- Protected from insect infestation, sunlight (unless permitted by the manufacturer) and mechanical damage.

# Technical Solution Sheet 1.01

FIGURE 3 – MINIMUM DETERMINED AIRFLOW FOR AVV: 3.5 L/S

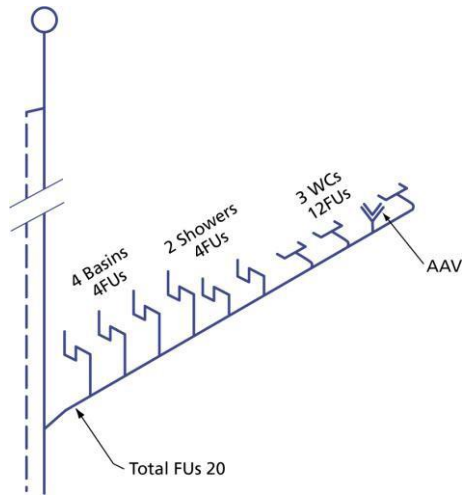


FIGURE 5 – GROUP VENTILATION: BRANCHED COMMON DISCHARGE PIPE

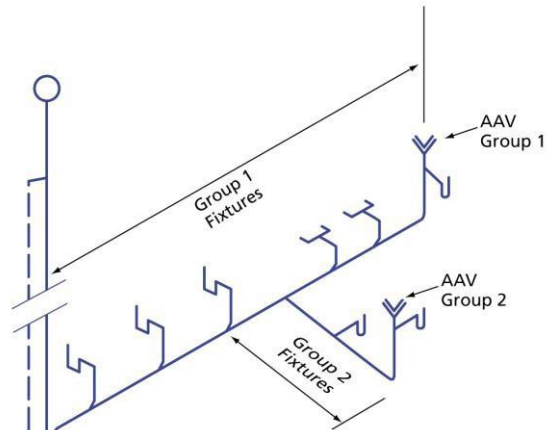


FIGURE 4 – GROUP VENTILATION: 10 TO 20 FIXTURES

